

# 15 INCH FRAME ASSEMBLY MANUAL

## SCREW LIST:

- |   |  |                          |   |
|---|--|--------------------------|---|
| 1 |  | 1 M3 * 25mm * 4 (6mm OD) | ① |
| 2 |  | 2 M3 * 32mm * 4 (6mm OD) |   |
- 
- |   |  |  |   |
|---|--|--|---|
| 1 |  | 1 M2 * 4mm * 2 (cup head) (fixed lens)                           | ② |
| 2 |  | 2 M2 * 5mm * 8 (round head) (fixed picture transmission)         |   |
| 3 |  | 3 M3 * 10mm * 8 (round head) (fixed fly-by-wire)                 |   |
| 4 |  | 4 M3 * 25mm * 4 (round head) (fixed flight control)              |   |
| 5 |  | 5 M3 * 12mm * 4 (round tip) (fixed tail print)                   |   |
| 6 |  | 6 M3 * 16mm * 1 (round head) (fixed tail vertical antenna print) |   |
| 7 |  | 7 M3 common nut * 8  |   |
| 8 |  | 8 M3 jam nut * 4   |   |
- 
- |   |  |  |   |
|---|--|--|---|
| 1 |  | 1 M3 * 35mm * 4 (cup head) (fixing the left and right clamps of the motor base)          | ③ |
|   |  | 2 M3 * 35mm * 8 (countersunk head) (fixing the upper and lower clamps of the motor base) |   |
|   |  | 3 M3 * 8mm * 16 (round head) (fixing the aluminum post of the motor base)                |   |
|   |  | 4 M4 * 8mm * 12 (Countersunk head) (Fixed motor)   |   |
|   |  | 5 M3 jam nut * 12  |   |
- 
- |   |  |  |   |
|---|--|--|---|
| 1 |  | 1 M3 * 38mm * 8 (cup head) (fixing four square tube arms)                            | ④ |
| 2 |  | 2 M3 * 35mm * 8 (cup head) (fixing the left and right clamps of the square tube arm) |   |
| 3 |  | 3 M3 jam nut * 16  |   |
| 4 |  | 4 M3 cup head screw washer gray * 8  |   |
- 
- |   |  |   |   |
|---|--|---|---|
| 1 |  | 1 M3 * 8mm * 8 (round head) (fixing two aluminum posts at the front of the fuselage, battery booster plate) | ⑤ |
| 2 |  | 2 M3 * 12mm * 8 (round head) (fixing four aluminum posts in the center of the fuselage)                     |   |

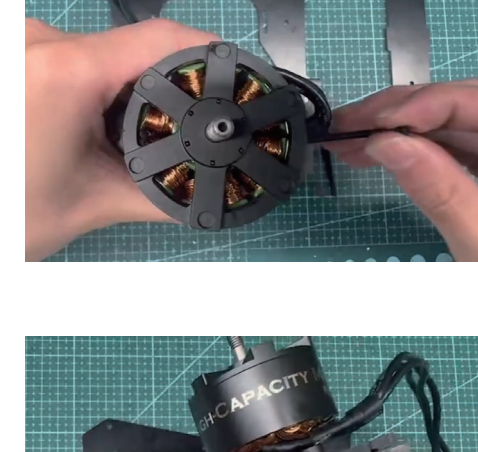


⑥

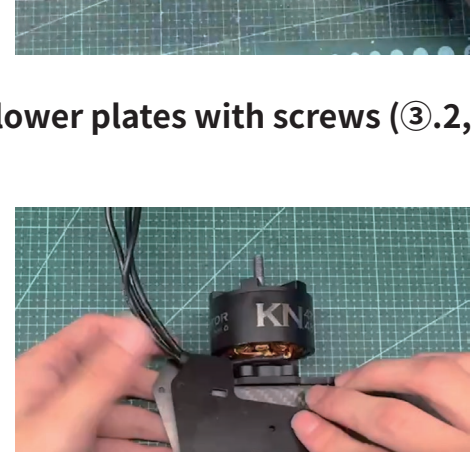
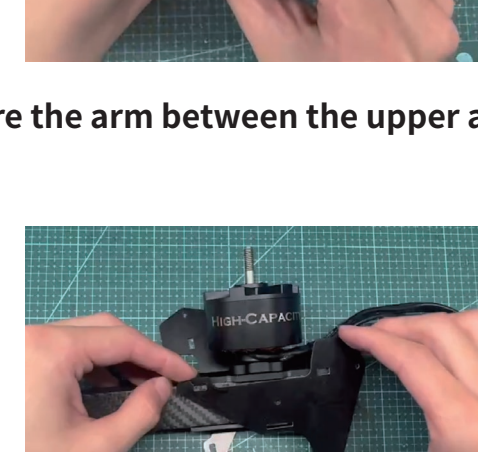
## SINGLE ARM INSTALLION MANUAL



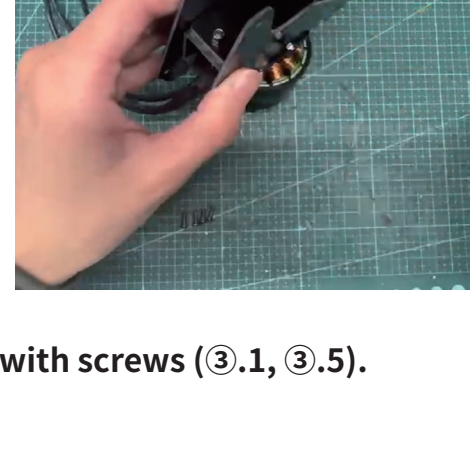
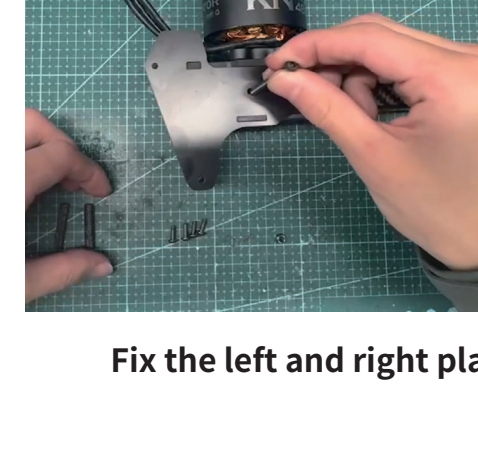
- 1 Motor fixing upper plate \* 1
- 2 Motor fixed lower plate \* 1
- 3 Motor fixed side plate \* 2
- 4 Motor arm \* 1



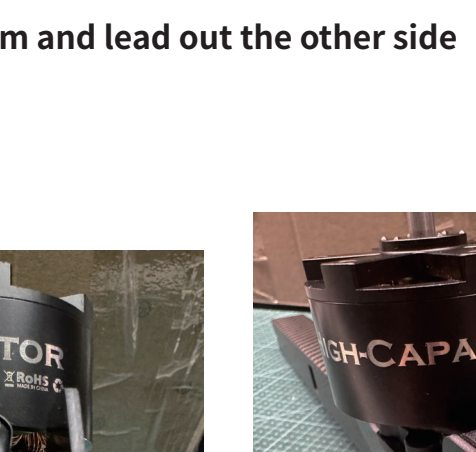
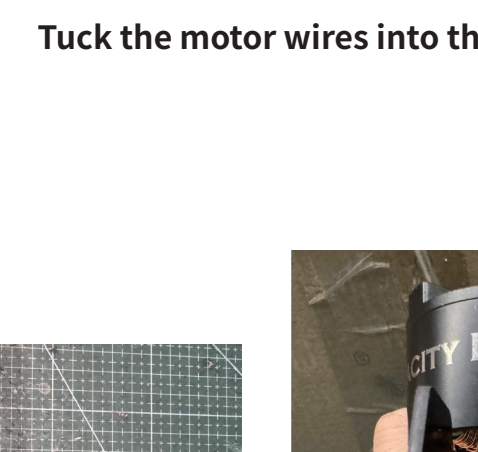
Align the motor holes with the upper plate holes and drive four screws (③.4)



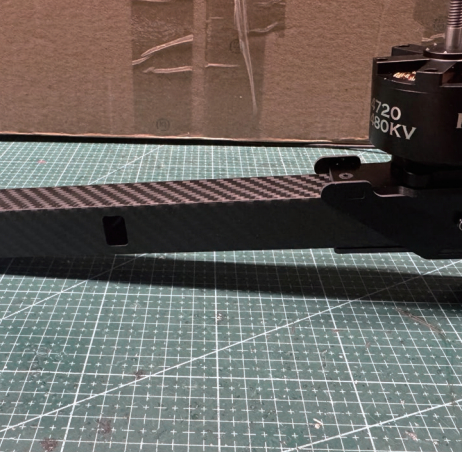
Secure the arm between the upper and lower plates with screws (③.2, ③.5).



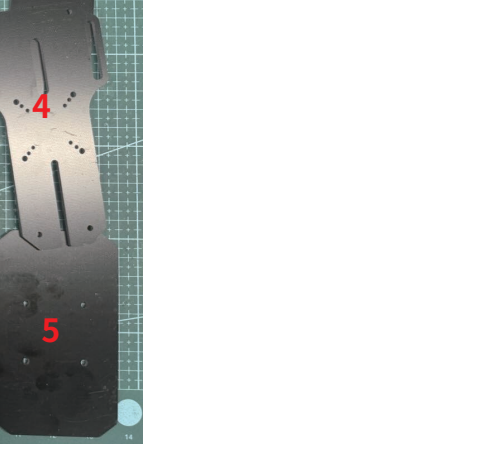
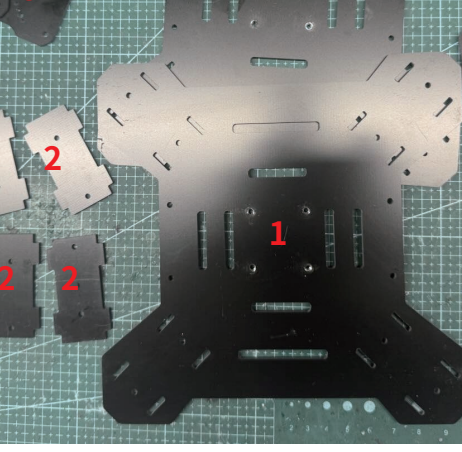
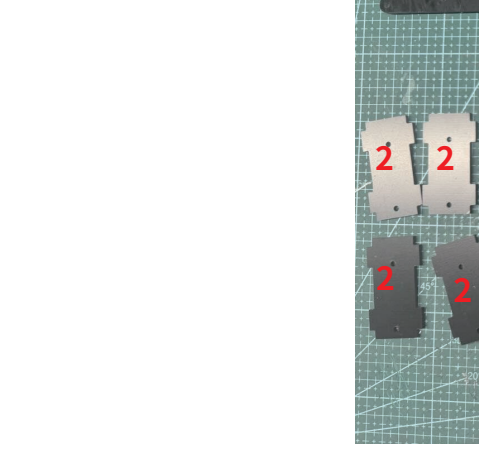
Snap the left and right plate tabs onto the tabs on the side of the arm



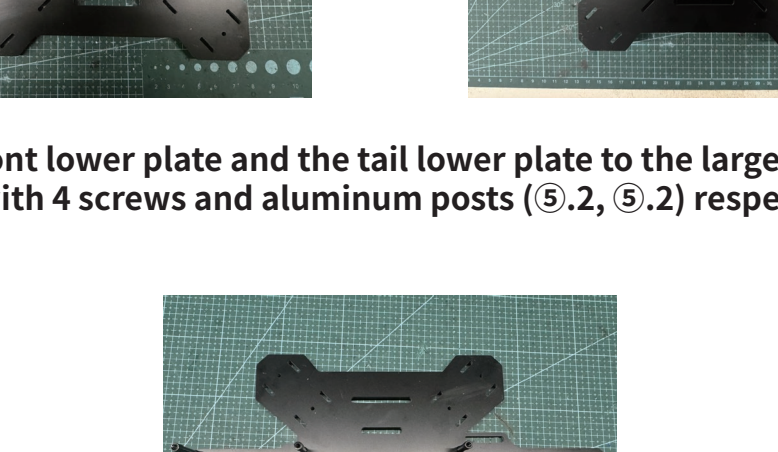
Fix the left and right plates with screws (③.1, ③.5).



Tuck the motor wires into the arm and lead out the other side

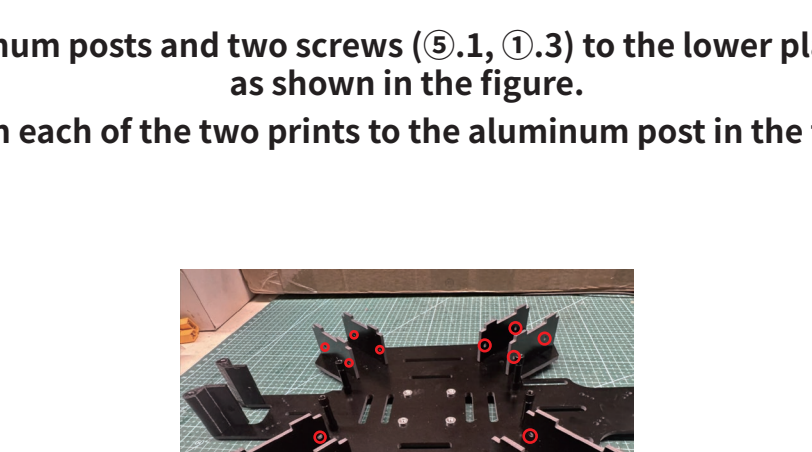


Secure the print between the left and right plates with the screws (③.3).

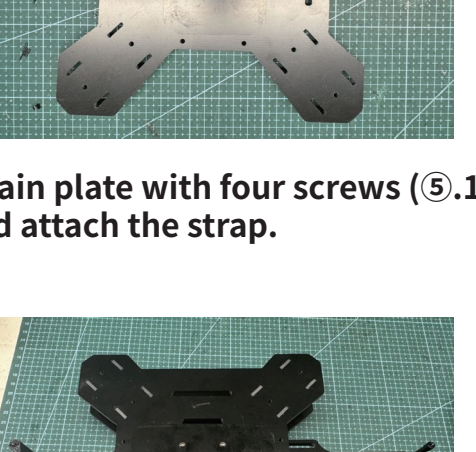
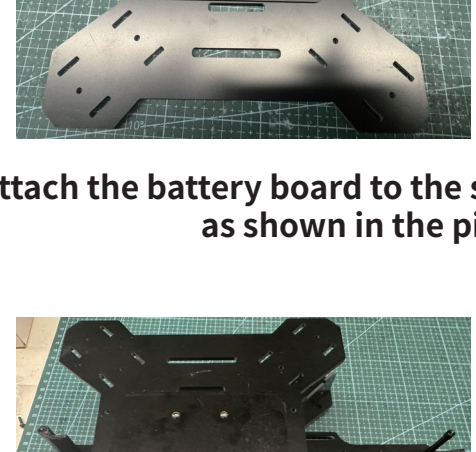


Completion of arm assembly

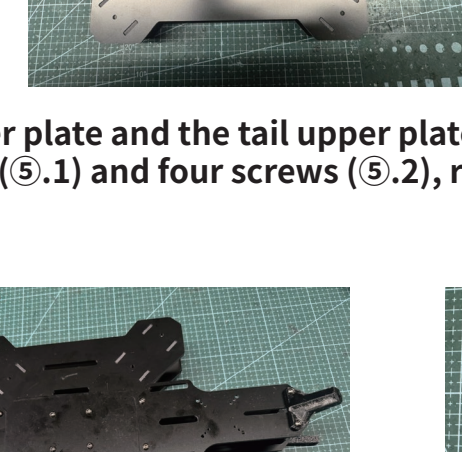
## FRAME INSTALLION MANUAL



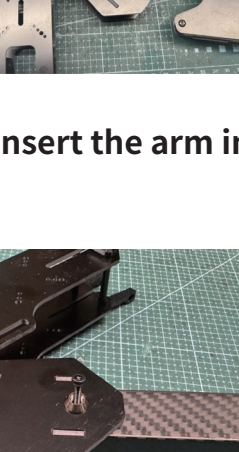
- 1 Large square main plate \* 2
- 2 Arm reinforcement side panels \* 8
- 3 Front upper and lower plates \* 2
- 4 Tail end upper and lower plates \* 2
- 5 Battery board \* 1



Attach the front lower plate and the tail lower plate to the large square main plate with 4 screws and aluminum posts (⑤.2, ⑤.2) respectively.

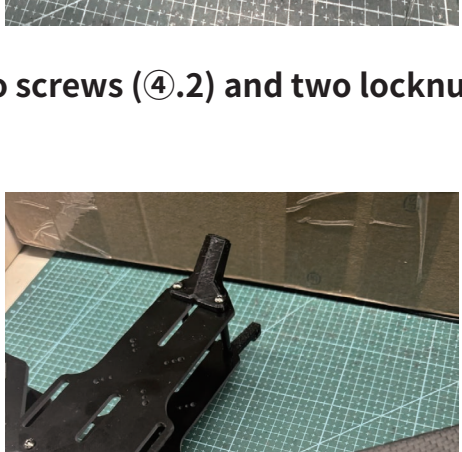


Attach two aluminum posts and two screws (⑤.1, ⑤.3) to the front lower plate as shown in the figure.

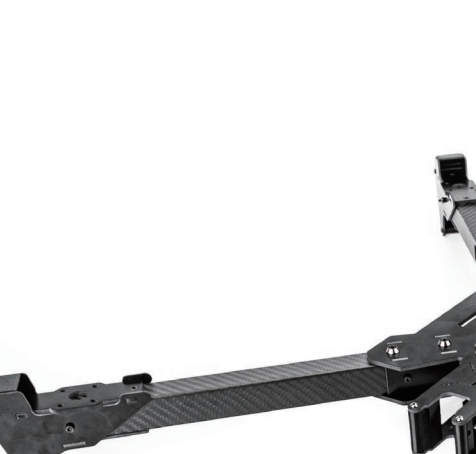


Attach two aluminum posts and two screws (⑤.1, ⑤.3) to the lower plate of the tail end as shown in the figure.

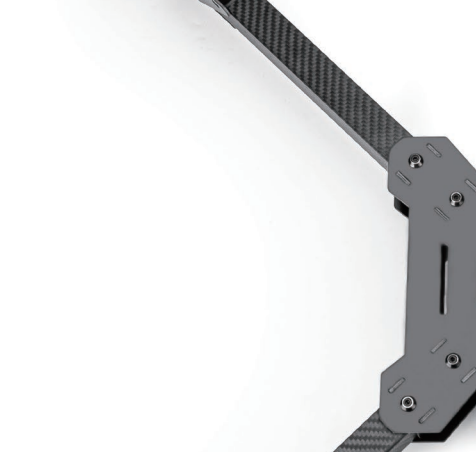
Attach each of the two prints to the aluminum post in the figure



Install arm reinforcement side plate \* 8 as shown (pay attention to the orientation)



Attach the battery board to the square main plate with four screws (⑤.1) as shown in the picture and attach the strap.



Snap the large installed battery board onto the arm reinforcement side plate as shown in the picture



Secure the front upper plate and the tail upper plate to the fuselage with two screws (⑤.1) and four screws (⑤.2), respectively.



Separately mount the two prints on the upper plate of the tail end as shown in the figure and drive one screw each (②.6, ⑤.1)



Insert the arm into the fuselage and align the holes



Secure the arm with two screws (④.1), two locknuts (④.3) and two washers (④.4).



Fix the side of the arm with two screws (④.2) and two locknuts (④.3) as shown in the figure.



Individual arm to fuselage connection complete!

## Final Frame

