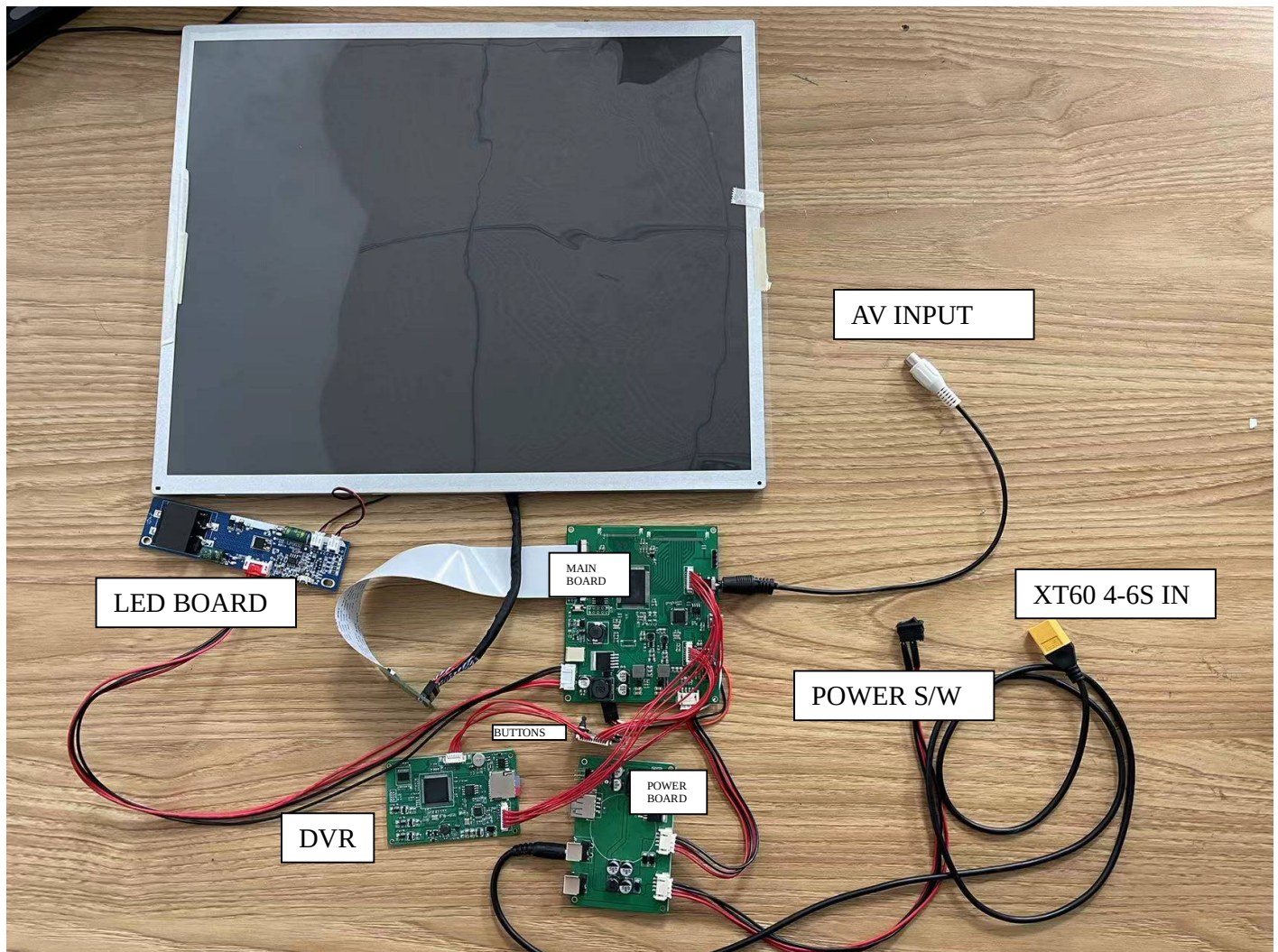
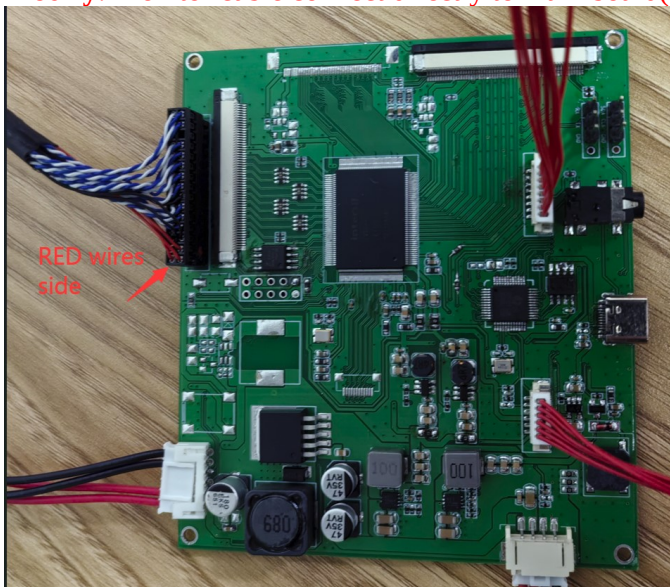
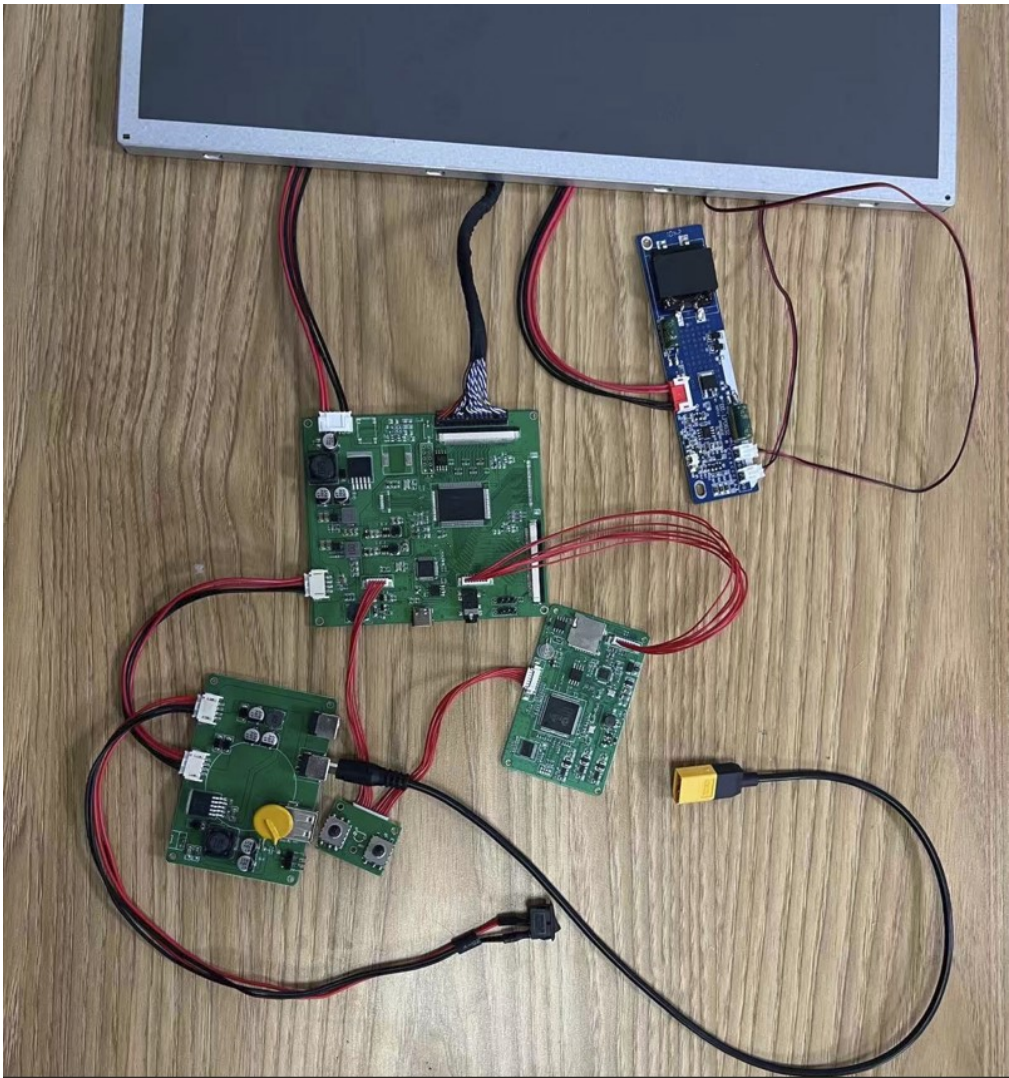


17 inch 1000lux/300lux FPV Monitor V2:

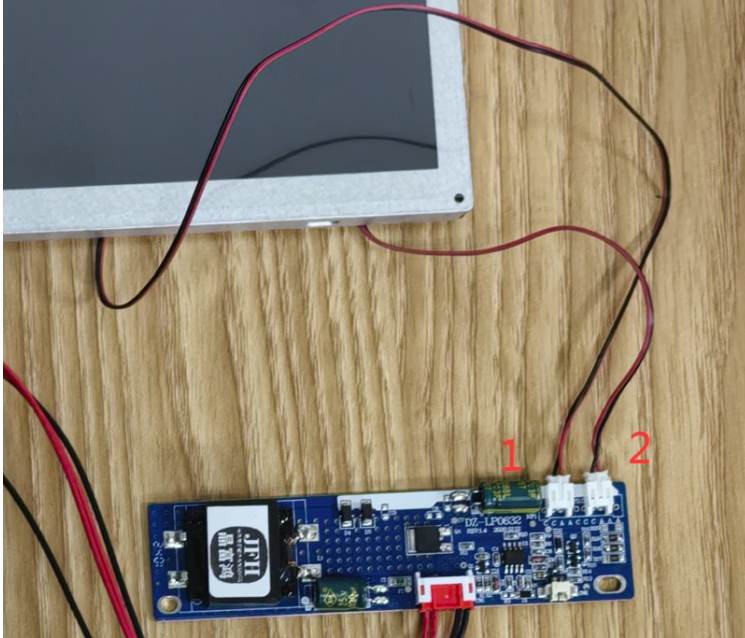


Modify: Monitor cable connect directly to main board(NOTE the red wires side to the board center):



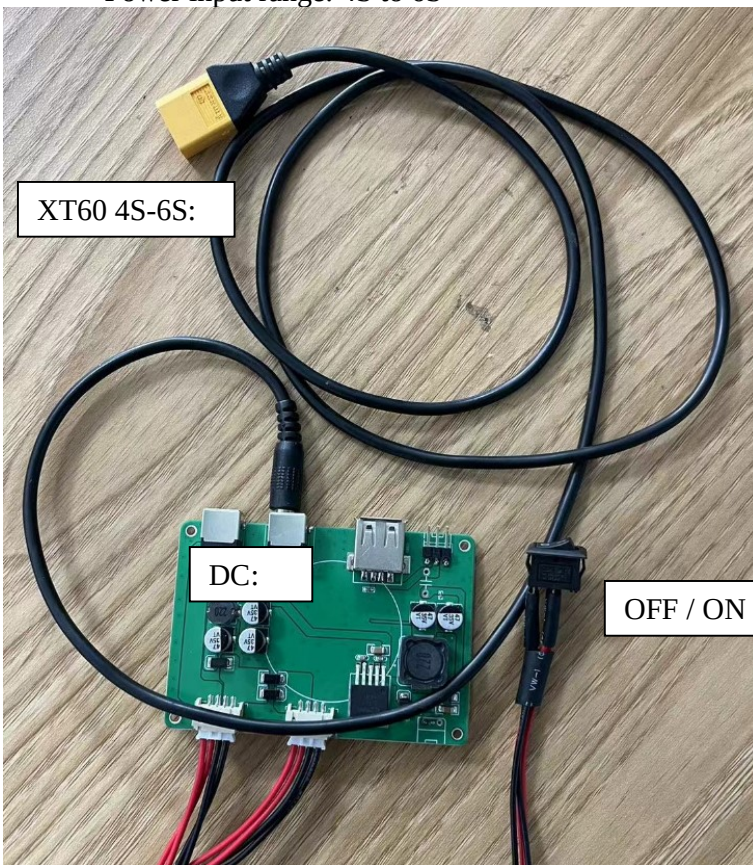


Black light LED connection(1 and 2 can be exchanged):



Power input and power switch:

Power input range: 4S to 6S

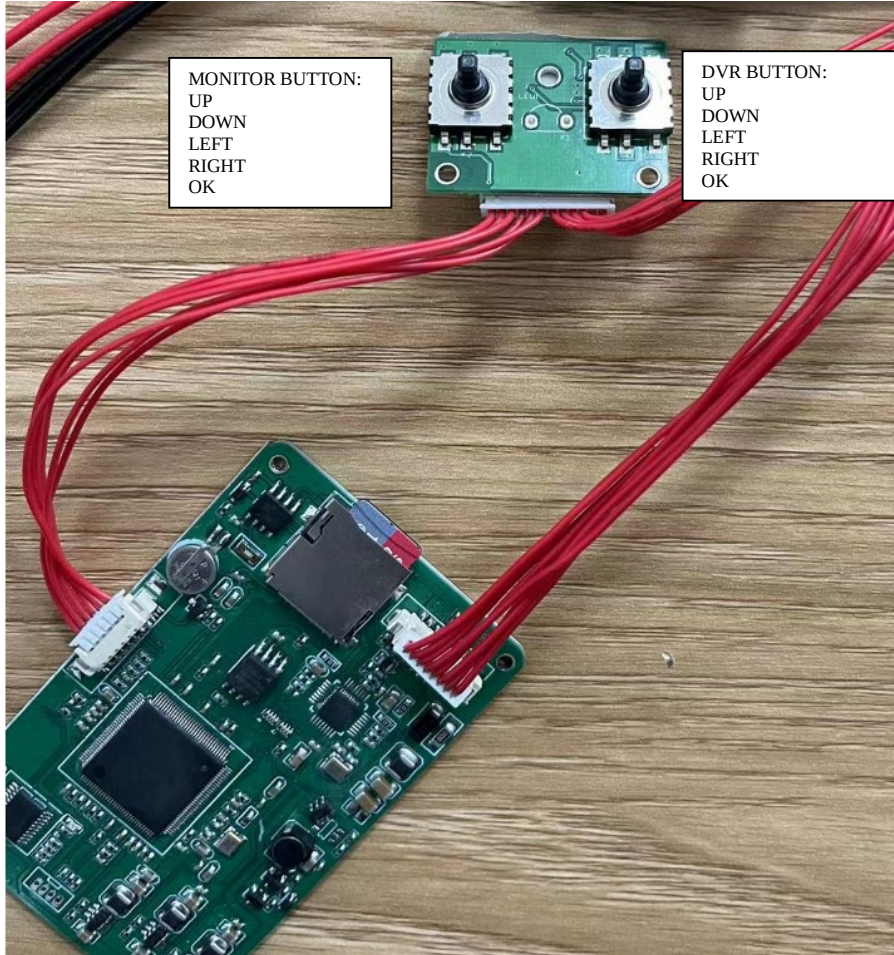


BUTTONS:

Monitor control 5 buttons : up, down, left, right, OK

DVR control 5 buttons : up, down, left, right, OK

DVR: 8-32G SD card fat32.



AV INPUT: 3.5mm to RCA connector

